



 Release Notes & What's New

 ISS45 8.1.8.1-090



ISS45 Release Notes

Date of Issue	Product ID Num.	Part Number	Brief Description
January 2005	45001/081	89000195	Initial Release
Other Releases: 89000233, 89000263, 89000263, 89000308, 89000308, 89000401, 89000417, 89000416, 89000480, 89000490, 89000508, 89000521, 89000532, 89000547, 89000573, 89000583, 89000587, 89000590, 89000613, 89000641, 89000658, 89000683, 89000692, 89000693, 89000712, 89000720, 89000734, 89000737, 89000740, 89000747, 89000748, 89000758, 89000767, 89000782, 89000791, 89000792, 89000793, 89000794, 89000796, 89000812, 89000815, 89000822, 89000825			
June 2015	45001/081	89000854	8.1.7.0-190 Release
September 2015	45001/081	89000861	8.1.8.0-050 Release Issue 2
September 2015	45001/081	89000862	8.1.8.0-060 Release
October 2015	45001/081	89000863	8.1.8.0-070 Release
December 2015	45001/081	89000872	8.1.8.0-080 Release
April 2016	45001/081	89000873	8.1.8.0-090 Release
September 2016	45001/081	89000877	8.1.8.1-050 Release
December 2016	45001/081	89000887	8.1.8.1-060 Release
April 2017	45001/081	89000888	8.1.8.1-070 Release
June 2017	45001/081	89000889	8.1.8.1-080 Release
August 2017	45001/081	89000890	8.1.8.1-090 Release

©Copyright NCR Corporation 1995-2017
All rights reserved

This publication is protected by federal copyright law. This document and its contents are the proprietary, confidential information and property of NCR Corporation ("NCR"). Unauthorized disclosure, reproduction, distribution or use of this document and/or its contents in any form is strictly prohibited. No part of this publication may be reproduced or transmitted into any human or computer language in any form or by any means, stored in a retrieval system, transmitted, redistributed, translated or disclosed to third parties, or de-compiled in any way including, but not limited to, photocopy, photograph, electronic, mechanical, magnetic or manual without the express written permission of NCR or its licensors, if any. This document, notwithstanding the above, may be distributed in electronic or printed form by NCR to personnel who are employed by either (a) a licensee and end user of the subject system of this document or (b) personnel from an authorized NCR Channel Partner or Solution Provider of the subject system of this document. All copies of this document so distributed and/or so authorized, shall contain a full copy of this copyright notice.

NCR has prepared this document as a guide to the proper installation, operation, customization and/or maintenance of NCR products. The drawings and specifications contained herein are the property of NCR and/or its licensors.

NCR endeavors to ensure that the information in this document is correct and fairly stated but does not accept liability for any error or omission. NCR makes no representation or warranties with respect to the contents hereof, and specifically disclaims any implied warranties of merchantability or fitness for a particular purpose or non-infringement. No commitments by NCR or its suppliers are made by or from this documentation which is provided for information only.

Development of NCR products and documentation is continuous: NCR reserves the right to revise this publication and to make changes at any time to the contents hereof or to the products herein described or discussed without notice and without any obligation for NCR to notify any person or organization of such revision or changes. Information published in this document will likely be superseded, and it is recommended that users regularly check for updates and newer versions.

The trademarks NCR, Retailix, StoreNext, ISS45, ScanMaster, R10, ACS, PocketOffice, RPO, RBO, ABO, Connected Payments, ServerEPS, Connected Services, Connected Loyalty, WinEPS and all other NCR product names are registered trademarks or trademarks of NCR; all other trademarks or registered trademarks are the property of their respective owners. Third-party products, services, or company names referenced in this document may be trademarked or copyrighted by their respective owners, and are for identification purposes only. Copyrights, trademarks and license agreements shall be governed and construed in accordance with the laws of the State of New York and the Federal Arbitration Act, and shall benefit NCR, its successors, and assigns.

Address comments and corrections regarding this document to:

Attn: Software Program Director
NCR
797 Commonwealth Drive
Warrendale, PA 15086

Table of Contents

Table of Contents.....	i
Introduction.....	1
414897 – Support for Solutran Healthy Savings Phase 1 (FO/POS/Sys)	2
ISS45-52 – Add Support to Existing “You Saved” on Receipt to include ProLogic Discounts	11
ISS45-706 – Conoco Zip Code Feature at Fuel Pump	12
ISS45-826 – Employee Discount Program with Employee ID Validation via Item Number	13
ISS45-832 – Support for SSCO Alt-ID Capture with ProLogic.....	15
ISS45-841 – Apply Windows Updates	17
ISS45-842 – Document MTX dll versions	17

Introduction

Enhancements were recently made to the ISS45 system. The changes are reflected in the accompanying ISS45 8.1.8.1-090 software. The Change Request Document (CRD) number assigned to each enhancement is listed in the description heading.

The Change Request Document (CRD) number assigned to each enhancement is listed in the description heading. Following the change description is an abbreviation (or combination thereof) of the ISS45 area affected:

(FO) – Front Office

(POS) – WinPOS

(Fuel) – ISS45 Fuel

(Sys) – System / Services

(SSCO) – Self-Service Check-Out

These enhancements are explained in detail in the following pages and are not included in the latest Office Users Guide, WinPOS User Guide or Office Administrator's Reference. If you have any questions regarding this release, please contact NCR Support.

414897 – Support for Solutran Healthy Savings Phase 1 (FO/POS/Sys)

The Solutran S3 Healthy Savings Platform is a new promotional technology designed to educate and reward consumer communities for healthy food purchases via a cross-retailer loyalty card program. The S3 Healthy Savings Platform features endorsements of healthy foods by health insurers and can be used across a range of participating retailers.

In this release ISS45 interfaces with the Solutran S3 host to support the acceptance of S3 Healthy Savings cards at the POS to process discounts via S3 host messaging and reports discount data on the customer receipt, transaction file and in the Store Sales Report.

Note:

Support for accepting S3 Healthy Savings cards at self-checkout terminals is out-of-scope in this implementation phase.

Front Office

New Parameters

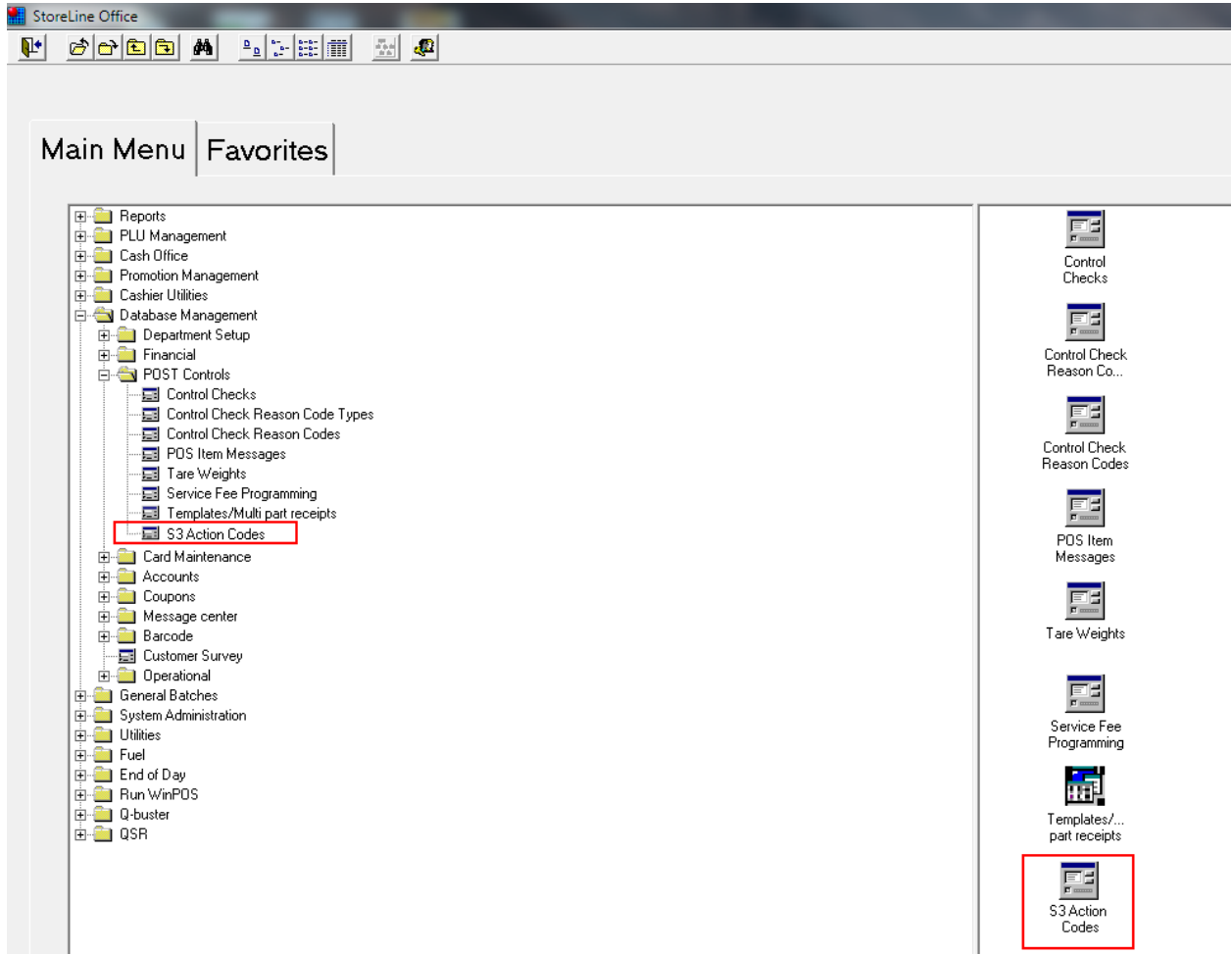
As part of this enhancement, new parameters have been established. The General System Parameters below are located in the **new** Store \ Technical \ Solutran S3 folder.

Parameter	Explanation
Solutran S3 Healthy Savings in system	This parameter defines whether Solutran S3 Healthy Savings is supported.
S3 Port Number	This parameter defines the TCP\IP port number utilized for the Solutran S3 interface.
S3 Primary Controller information	This parameter contains information regarding the S3 Primary Controller. The value entered can be either the S3 Primary Controller's IP

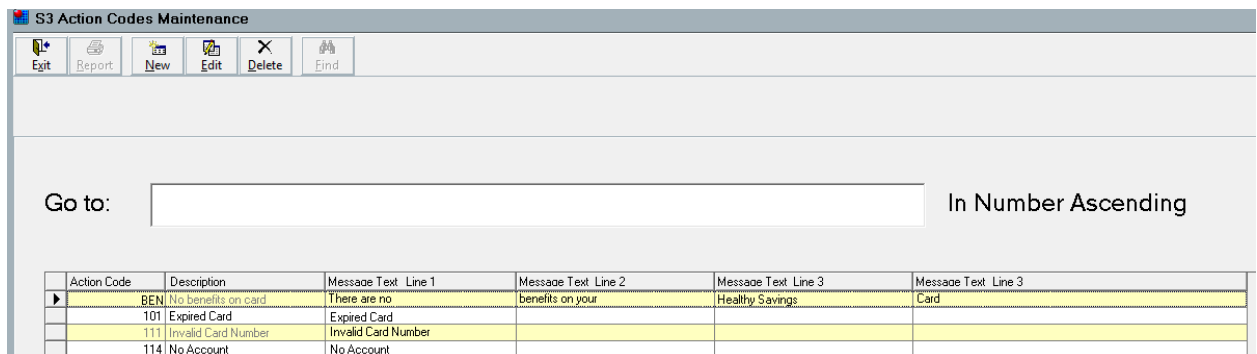
Parameter	Explanation
	address or the server alias to be used during IP resolution.
S3 Secondary Controller information	This parameter contains information regarding the S3 Secondary Controller. The value entered can be either the S3 Secondary Controller's IP address or the server alias to be used during IP resolution.
S3 POS Timeout	This parameter specifies how long (in seconds) the POS application will wait for a response from the S3 host. If no response is received, the POS will continue with the transaction.
Number of retry attempts	This parameter defines the number of times a request message will be retried when no response is received from the S3 host.
Prompt for verification of card purchase	When this parameter is set to Yes, a prompt will be displayed on the cashier screen to allow verification of card purchase(s) before continuing the transaction.

New S3 Action Codes Maintenance

The Database Management's POST Controls folder has a new S3 Action Codes Maintenance application to customize messages that display to the cashier when Action Codes are returned from Solutran.



Once the application is launched, the S3 Actions Codes Maintenance screen displays all current Action Codes pre-populated by the Front Office:



The following columns display:

- **Action Code** – The S3 Action Code.
- **Message Text Line 1 (through 4)** – The text to display to the cashier when the action code is received from the Solutran S3 host.

➤ **To Add an Action Code:**

- 1 Click the **Add** button. The S3 Action Codes Maintenance Screen displays:

The screenshot shows a dialog box titled "S3 Action Codes Maintenance". It contains the following fields and controls:

- Action Code:
- Description:
- Message Text Line 1:
- Message Text Line 2:
- Message Text Line 3:
- Message Text Line 4:
- Navigation buttons: Home, Previous, Next, End
- Action buttons: OK, Cancel, Apply

- 2 Enter the **Action Code**, **Description** and up to 4 message text lines.
- 3 Click **Apply**.

Note:

If an Action Code is received from the S3 host but not defined within Front Office, a generic message of "S3 Communication error XXX" will be displayed where XXX represents the 3-character Action Code received.

New Barcode Programming Type

In support of this feature, a new Barcode Type of "Consumer Card" has been added to the Database Management Folder's Barcode Programming Maintenance Application.

The screenshot shows the 'Barcode Programming' window with the 'Basic Setup' tab selected. The 'Barcode Type' dropdown is set to 'Consumer Card'. A red box highlights the 'Barcode Type' dropdown and the 'Barcode Scan Restrictions' section. A callout box points to the 'Barcode Type' dropdown with the text 'Barcode Type of Consumer Card'.

The following fields appear on the Basic Setup Tab in Barcode Programming Screen for Barcode Types of “Consumer Card”:

Field	Description
Linked PLU for card purchase	Enter the zero-price, non-merchandise PLU number used for Solutran card purchases.
	Note: The POS will override any price configured for the item with the 'Debit' amount returned in the Authorization Response message.
Restrict barcode acceptance to:	Check this box to restrict acceptance of a consumer card barcodes in this range to a designated POS mode.
No Sale	For barcode scan restrictions, check this box to accept consumer cards in No Sale mode.
Sale Mode	For barcode restrictions, check this box to accept consumer cards in Sales mode.
Tender Mode	For barcode restrictions, check this box to accept consumer cards in Tender mode.

Store Sales Report Change

The Store Sales Report now contains totals for issued S3 Store Rewards and S3 Manufacturer Rewards:

Store Sales Report

Fleetwood

Branch 777

Store Totals

For 09/16/2014

	Count	Value		Count	Value
Net Sales		27,721.52	Taxable Refunds		0.00
Non Merchandise Sales		0.00	Non-tax Refunds		17.19
Misc Paid Outs		0.00	Promotion Discounts	293	704.07
Taxable Sales		4,577.27	Items Count	8983	27,672.08
Non tax Sales		22,740.55	Customer Count	1564	
Tax Collected		337.49	Average Order Size	6	17.71
Tax Refunded	1	-0.21	Average Item Value		3.08
Tax Exempted	0	0.00	Item per Minute	18	
Tax Forgiven		20.32	Dept %	4	0.04%
Training Sales		196.38	Scan %	7660	85.27%
Store Coupons	294	360.02	Keyed %	1322	14.72%
Vendor Coupons	66	66.21	Info %	8986	100.03%
Electronic Vendor Coupons	0	0.00			
Smart Card Coupons	0	0.00			
Bonus Coupons	0	0.00			
Electronic Store Coupons	0	0.00			
Voids	57	326.57			
Bottle Deposits	0	0.00			
Bottle Refunds	0	0.00			
Refunds	3	17.19			
S3 Store Rewards	33	79.63			
S3 Manufacturer Rewards	44	89.98			

Tender Type	Count	Value
Default	862	17,918.36
Cash Acc	762	6,733.34
Check Acc	50	3,040.56
Debit Acc	0	0.00
Total	1674	27,692.26

POS

If the new General System Parameter "Solustran S3 Healthy Savings in system" is set to "Yes", the POS handles the following S3 transaction messaging scenarios:

- S3 discount processing with no coupons.

- S3 discount processing with coupons.
- Multiple S3 cards added in a ticket.
- Voided items after S3 discounts are applied.
- Voided transactions after S3 discounts are applied.
- Voiding purchased S3 cards in a ticket.
- S3 network timeouts and attempted retries.
- Transaction recovery.
- Save and recall of S3 tickets.

When the PLU identified in Barcode Programming Maintenance as the “Linked PLU for card purchase” is sold in a ticket and the General System Parameter “Prompt for verification of card purchase” is set to “Yes”, the following screen is displayed to the cashier (with the amount returned in the authorization response for the cost of the S3 card):

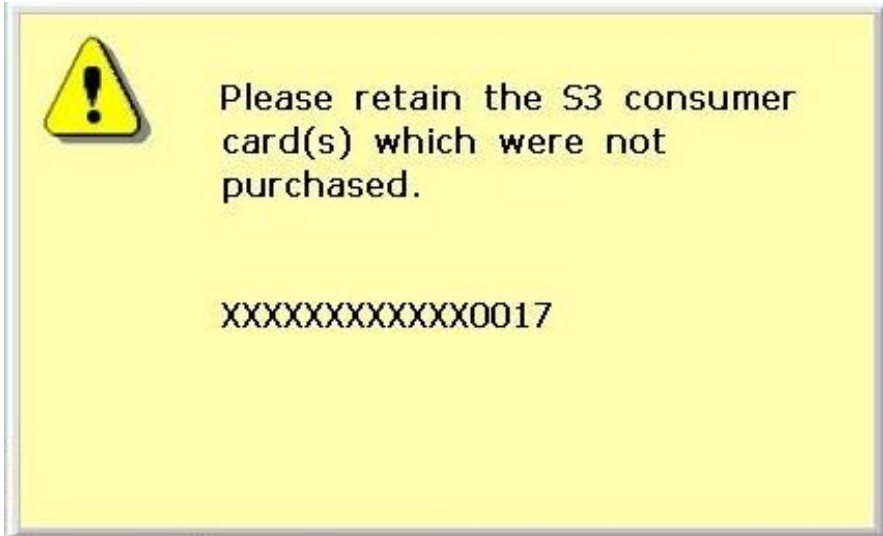


Ask Customer:

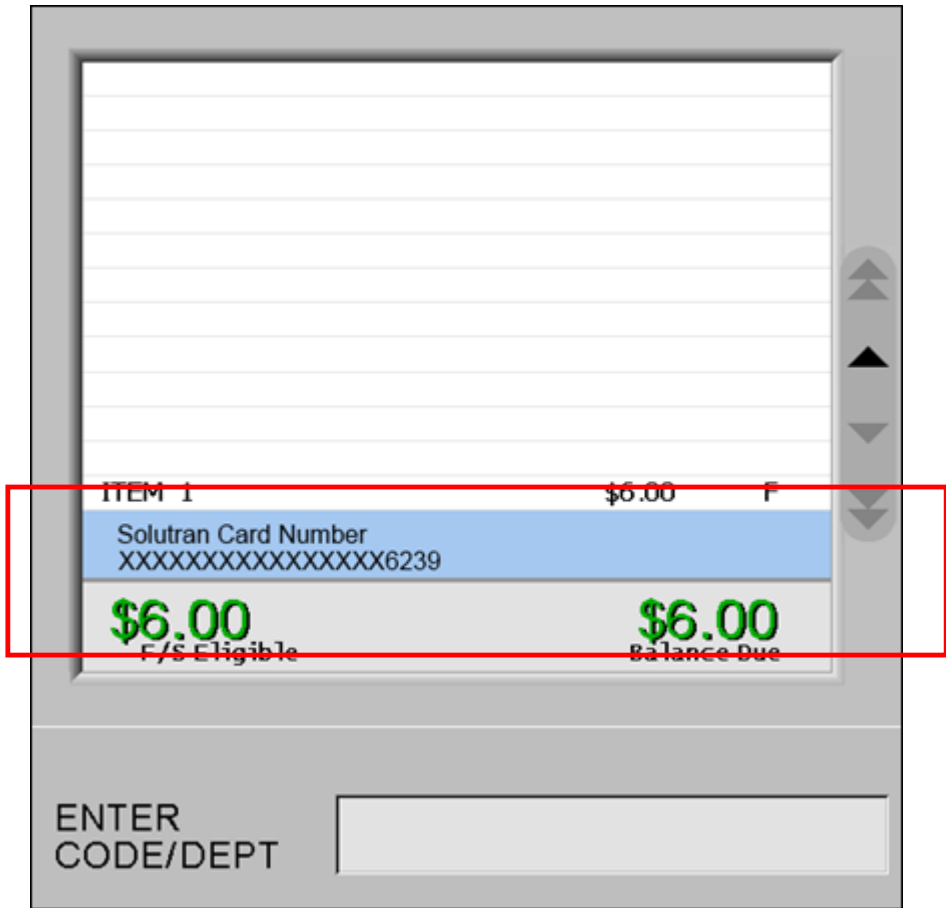
Would you like to proceed
with the purchase of the
Healthy Savings card?

XXXXXXXXXXXX0012 \$25.00

If “Yes” is selected, the card is added to the ticket for activation. If “No” is selected, the cashier is prompted to retain the unpurchased cards.



When an S3 card number is scanned (or key-entered) at any point during the transaction, the POS displays the masked S3 card on customer display and cashier display (once accepted).



After ticket total, the POS sends a request to the S3 Controller. The host calculates benefits / discounts and returns the discount type, amount, and description in message response to the POS. S3 discounts are deducted from the transaction and displayed on cashier and customer display.

When an S3 Action Code is received by the POS in the response message from the S3 controller, the POS verifies if the S3 Action Code is defined within Front Office and displays the defined text established in S3 Action Codes Maintenance. If the Action Code is not defined, the POS displays a generic error message "S3 Communication error XXX" on the cashier display (where XXX will be the value of the S3 Action Code).

Receipt Changes

The POS supports printing supplemental data returned by the S3 host in the Discount Response message. The text "S3 Healthy Savings" and "Healthy Savings" is pulled from the response messages and is printed below the associated item and summary section respectively.

Milk RF 2%	3.25
Carrots Baby Cut	1.40
S3 Healthy Savings 1234	-1.30
Amer. Salad Blend	1.40
Organic Portabella	1.50
Large Eggs	2.00
Frozen Fruit	3.79
Borden Whole Milk	5.00
Pepper Mini	
1 @ 2 For 1.99	1.00
Pepper Mini	
1 @ 2 For 1.99	0.99
Organic Carrots Juice	1.00
Organic Carrots Juice	1.00
Organic Carrots Juice	1.00
Organic Eggplant	1.00
Green Beans	1.20
Red Potatoes	1.30
S3 Healthy Savings 4321	-1.00
SUBTOTAL	25.83
Sales Tax	0.00
ORDER TOTAL	25.83
Cash	25.83
CHANGE	0.00

Healthy Savings X2222		
<u>Savings Summary</u>		
TOTAL DISCOUNTS	2	-2.30

CASHIER NAME: JOHN
 STORE: 03794 REGISTER: 151 CASHIER: 0102
 TICKET#: 0155 20FEB2015 11:24:38

In sites using the Dynamic Receipt Engine (DRE), the "Count of receipt lines" field is sent to DRE identifying the number of S3 print lines to be printed and the "Print Line" field is sent containing the text to print.

Note:

S3 transaction data is written to a new Opcode 80x1D (TRANS_INFO3_S3) in the TLOG.

Note:

Refunds of purchased S3 cards are out of scope as it is not currently supported today via the standard POS process.

Note:

If an item is voided after the ticket is initially totaled. The revised list of items purchased is forwarded to the S3 host to determine applicable discounts.

Note:

The POS sends a Cancel Discount Request message to the S3 Controller when transactions are voided after S3 discounts were deducted.

Note:

When an S3 card is present in a transaction and a coupon is scanned, the POS ignores the General System Parameter "Allow coupon entry only in tender mode" and accepts the coupon in Sale Mode. After the coupons are entered and cashier totals the ticket, S3 discounts are applied and the transaction is finalized.

Note:

S3 cards can be voided from a ticket. The POS will display the "Card Voided" message.

ISS45-52 – Add Support to Existing “You Saved” on Receipt to include ProLogic Discounts

The receipt now combines the POS “You Saved” discounts and the ProLogic “You Saved” discounts in one total “You Saved” discount line.

This will eliminate the need to have the ProLogic “You Saved” receipt print from the ProLogic printer.

The “You Saved” total will include Vendor Coupons, Store Coupons, Discounts, Promotions and ProLogic Coupons.

ISS45-706 – Conoco Zip Code Feature at Fuel Pump

The solution for the zip code prompting on PAP is to use the existing card resolution functionality in the Retailix.CardServices.dll. The solution replaces the current use of the “**PromptForZipCode**” Registry flag for all card types. In order for Zip Code to prompt with the Conoco fuel pump, the new XML configuration file will have the card ranges defined. Cards whose range is found in this file will be prompted for Zip Code at the pump. Cards whose range is not found in the file will not be prompted for Zip Code.

The following registry key must be set to “**No**” so that by default, cards are not prompted for Zip Code:

```
HKEY_LOCAL_MACHINE\SOFTWARE\PointOfSale\PayPointLink  
Server\GeneralParameters\PromptForZipCode
```

The CardRanges.XML file should be edited to add the following:

<CardDefinition> section for each range that requires a Zip Code prompt, as in the below example:

```
<CardDefinition Type="5" Description="FLEET VS">  
<Range Length="4" End="4807" Start="4800" ZipRequired="1"/>  
</CardDefinition>
```

(Card Type should always = 5. ZipRequired should always = 1.)

ISS45-826 – Employee Discount Program with Employee ID Validation via Item Number

An Employee Discount program has been created to automatically apply a discount to the transaction total if the Employee ID is linked to the UPC free item in the PLU Maintenance.

Each Employee ID is associated with a free UPC item created in the item file. These UPC items are assigned to the Employee Department in the item file. The Employee Department is created in the Department Maintenance program.

When an employee UPC item is scanned or key-entered, the discount defined as the Employee Discount Percentage will apply to the transaction when the total key is selected.

If the employee UPC item is voided before the total key is selected, the employee discount will not be applied to the transaction. If the employee UPC item is voided after the total key is selected, the employee discount will need to be voided manually.

If the sale is saved and recalled, the Employee discount will retain in the sale.

If an open department item is entered to the Employee Department defined in the General System Parameters, the amount will not include in the discount amount.

There are 4 new General System Parameters that need properly configured for this feature to function correctly.

Front Office

New Parameters

As part of this enhancement, new parameters have been established. The General System Parameters below are located in the **new** Store \ POST\Operational\UPC-based Employee Discount.

Parameter	Explanation
Enable UPC-Based Employee Discount	<p>The option enables the use of the UPC-based employee discount Program.</p> <p>Value: Y/N</p> <p>Default Value: N</p>
Employee Department	<p>This parameter specifies the department which will designate employee numbers in the PLU database for use with the UPC-base Employee Discount Program.</p> <p>Values: Department Number (Select Department list)</p> <p>Default Value: blank</p>
Employee Discount Percentage	<p>This parameter specifies the percentage of a UPC-based Employee Discount.</p> <p>Values: 0.00 to 100.00</p> <p>Default Value: 0</p>
Employee Discount Description	<p>This parameter specifies the text to display and print when a UPC-based employee discount is sold. If no description is provided, the default text is "TICKET DISCOUNT"</p> <p>Values: Alpha-numeric – 15 characters max</p> <p>Default Value: blank</p>

ISS45-832 – Support for SSCO Alt-ID Capture with ProLogic

ISS45 now supports entering an Alternate ID on the SSCO with using the ProLogic interface. The option **AllowAltIDEntry=Y** needs enabled for the feature to work. To add this option to the SCOTOPTS.000, the following entry needs added including the header:

[Operations]

AllowAltIDEntry=Y

When this option set to Yes, a button will appear on the Start screen to allow the customer to enter the alternate ID.



If the customer presses the Alternate ID / Phone Number Entry button the screen will allow the customer to enter the Alternate ID / Phone Number:

Alternate ID / Phone Number Entry NCR SelfServ™
Checkout

Enter your Alternate ID / Phone number.

—

1 2 3 Backspace

4 5 6

7 8 9

Clear 0 Done

With the support of the ProLogic, the alternate ID will look up the customer number from the ProLogic customer file and communicate the customer number to the SSCO.

If there are multiple customers for the same alternate ID, the SSCO will accept the first customer on the list.

ISS45-841 – Apply Windows Updates

The latest Windows Updates have been tested and applied in this release of the ISS45.

- This release was tested with the available Windows Updates applied 7/20/2017.

MFS1 - Nobilis - Windows 7 Profession SP1

POS – NCR RP60 – POSReady 7 SP1

ISS45-842 – Document MTX dll versions

The updated MTX dll versions of Connected Payments and WinEPS are in this release of ISS45.

- This release was validated with the following Connected Payments and WinEPS dlls.

Connected Payments:

Verifone: Gold 31

MTX_POS.dll	828.7.0.21
MTX_EPS.dll	828.7.21.44
MTX_SE.dll	828.1.0.3

Equinox: Gold 8

MTX_POS.dll	829.2.0.17
MTX_EPS.dll	829.2.21.42
MTX_SE.dll	828.1.0.3

WinEPS:

MTX_POS.dll	828.1.1.207
MTX_EPS.dll	828.1.1.372

MTX_POS_CPMX.dll	828.7.0.21
MTX_POS_CPEQ.dll	829.2.0.17
MTX_POS_WinEPS.dll	828.1.1.207
MTX_POS_EMPTY.dll	No version



© NCR Corporation, 2017

NCR endeavors to ensure that the information in this document is correct and fairly stated but does not accept liability for any error or omission.

The development of NCR products and services is continuous and published information may not be up to date. It is important to check the current position with NCR. This document is not part of a contract or license, save insofar as may be expressly agreed.

NCR Corporation
2651 Satellite Blvd.
Duluth, GA 30096

P/N 89000890
PIN 45001/081